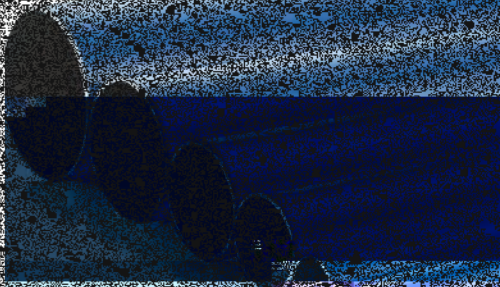
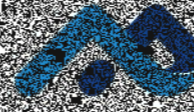
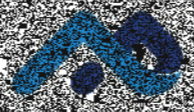


We provide superior
performing compressed air



ENGINEERED FOR SUPERIOR PERFORMANCE



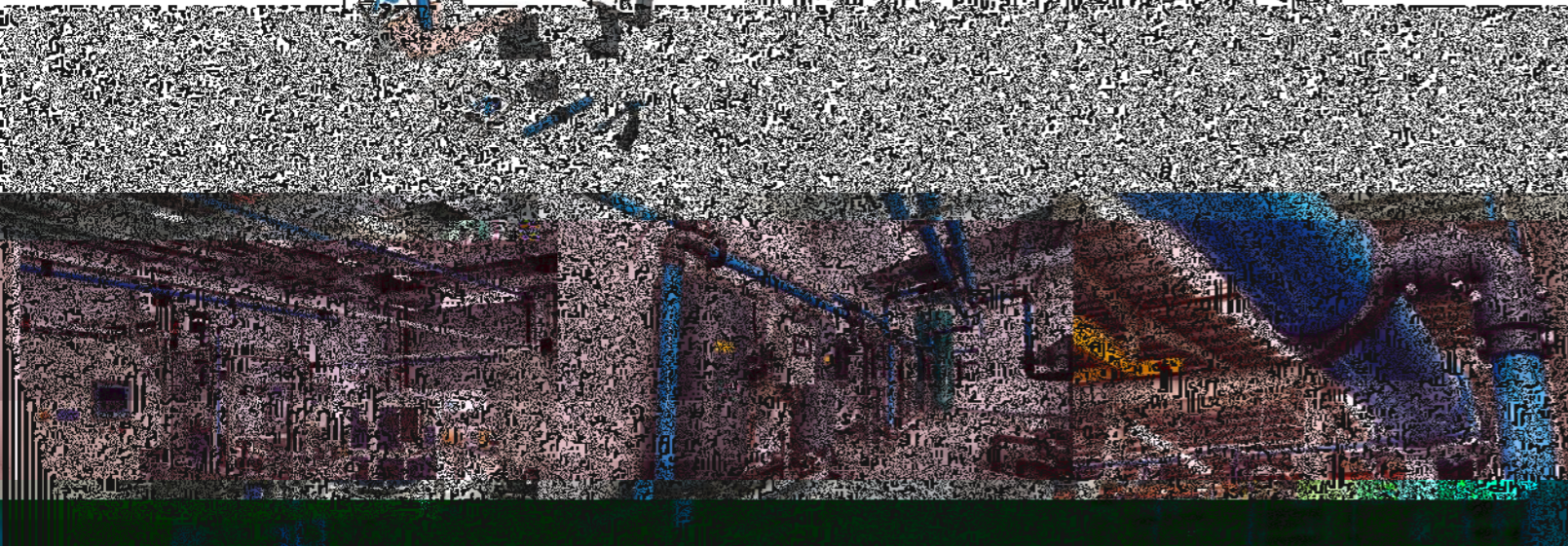


AIRpipe specializes in solutions for compressed air and fluids distribution. Through out the last 12 years, we have continued to invest in R&D, by taking into account market feedback and real-world conditions, our technology has gone through several stages of evolution. Today the new generation of products are engineered to be the most superior products available.

More than 31,000m2 layout, 100% ownership of manufacturing plants, R&D center, office, logistic center. We're committed to your total solution provider for products, system design, engineering proposal and installations.



Our products are utilized globally for all compressed



Superior Reliability & Longevity

- Highly durable materials resistant to corrosion, vibration, thermal variation, and outdoor weather conditions.
- Metal clamshell connectors for all diameters are stronger and more durable versus polymer fittings.
- Unique grab ring design (20-50mm) and lugged ring (63-200mm) allows for zero risk of disconnection.
- Patented active concentric seals provide leak free performance, even in high vibration applications. Seal lifespan is double that of industry competitors.



Energy & Cost Savings

- The smooth interior design and high-flow connectors ensures a constant supply of clean air at a reduced pressure drop, resulting in significant energy savings.
- Guaranteed leak-free performance and superior longevity versus traditional pipe systems.

Quick & Easy Modular Installation

- Complete range of pipe, fittings and accessories works easily for new projects renovations & extensions.
- Requires no special tooling, welding, gluing, brazing, soldering, or thread cutting.
- Reusable, lightweight, and modular design allows for easy modifications.
- Quick drops can be added at any time to create new points of use.



Dual Performance

- Surface contact and active sealing
- Working Pressure up to 16bar
- 20 year life

Product Range & Features

Single Aluminum Pipe



- Up to max.200mm diameter - 200m³/min flow single line.
- High-quality powder coating and colors customization.
- Designed for compressed air, vacuum, and inert gases.
- Light-weight & corrosion-free.

Ball & Butterfly Valves



- Quick connection.
- Available for BSP/NPT thread, flange, plug-in connection type.
- High-flow design ensures optimal performance.

Pipe Connectors



Flexible Hoses



Quick Disconnect Fittings



Tools & Accessories



- S
- U
- D

BLUE ALUMINUM PIPE

5.8M Length

AIRpipe	DN	OD	ID
301 00 0100 01	20	20.1	17.5
301 00 0200 01	25	25.1	22.5
301 00 0400 01	40	40.1	36.5
301 00 0500 01	50	50.1	45.7
301 00 0600 01	63	67.6	63.0
301 00 0700 01	80	84.8	80.0
301 00 0800 01	100	101.8	96.8
301 00 0900 01	150	153.0	147.5
301 00 1000 01	200	205.0	197.8

* 2.9M length please contact local sales.

GREEN ALUMINUM PIPE

5.8M Length

AIRpipe	DN	OD	ID
301 00 0100 03	20	20.1	17.5
301 00 0200 03	25	25.1	22.5
301 00 0400 03	40	40.1	36.5
301 00 0500 03	50	50.1	45.7
301 00 0600 03	63	67.6	63.0
301 00 0700 03	80	84.8	80.0
301 00 0800 03	100	101.8	96.8
301 00 0900 03	150	153.0	147.5
301 00 1000 03	200	205.0	197.8

* 2.9M length please contact local sales.

EQUAL 90° ELBOW

AIRpipe	DN
302 03 0100 02	20
302 03 0200 02	25
302 03 0400 02	40

EQUAL 45° ELBOW

AIRpipe	DN
302 03 0100 02	20
302 03 0200 02	25
302 03 0400 02	40

GRAY ALUMINUM PIPE

5.8M Length

AIRpipe	DN	OD	ID
301 00 0100 02	20	20.1	17.5
301 00 0200 02	25	25.1	22.5
301 00 0400 02	40	40.1	36.5
301 00 0500 02	50	50.1	45.7
301 00 0600 02	63	67.6	63.0
301 00 0700 02	80	84.8	80.0
301 00 0800 02	100	101.8	96.8
301 00 0900 02	150	153.0	147.5
301 00 1000 02	200	205.0	197.8

* 2.9M length please contact local sales.

END CAP

AIRpipe	DN
302 06 0100 02	20
302 06 0200 02	25
302 06 0400 02	40
302 06 0500 02	50
302 06 0600 01	63
302 06 0700 01	80
302 06 0800 01	100
302 06 1000 01	150
302 06 1100 01	200

*Use one union connector

REDUCING TEE

AIRpipe	DN	DN
302 07 0201 02	25	20
302 07 0402 02	40	25

LATERAL REDUCING TEE

AIRpipe	DN	DN
302 07 0201 02	25	20
302 07 0402 02	40	25

EQUAL PIPE TO PIPE

AIRpipe	DN	DN
302 21 0201 02	25	20
302 21 0402 02	40	25
302 21 0502 02	50	25
302 21 0504 02	50	40
302 21 0604 02	63	40
302 21 0605 02	63	50
302 21 0705 02	80	50

*Union connectors size below 63 included

REDUCING PIPE TO PIPE CONNECTORS

AIRpipe	DN	DN
302 21 0201 02	25	20
302 21 0402 02	40	25
302 21 0502 02	50	25
302 21 0504 02	50	40
302 21 0604 02	63	40
302 21 0605 02	63	50
302 21 0705 02	80	50

*Union connectors size below 63 included

ALUMINUM JOINT FEMALE TREATMENT

AIRpipe	DN	DN
302 21 0706 01	80	63
302 21 0808 01	100	63
302 21 0807 01	100	80
302 21 1007 01	150	80
302 21 1008 01	150	100

ALUMINUM JOINT FEMALE TREATMENT



ALUMINUM JOINT FEMALE TREATMENT



FIXTURE CLAMPS & ACCESSORIES

Clamps, Plastic

AIRpipe	DN
302 22 0100 01	20
302 22 0200 01	25
302 22 0400 01	40
302 22 0500 01	50
302 22 0600 01	63
302 22 0700 01	80
302 22 0800 01	100

Steel

AIRpipe	DN
302 22 0401 01	40
302 22 0501 01	50
302 22 0601 01	63
302 22 0701 01	80
302 22 0801 01	100
302 22 1001 01	150
302 22 1101 01	200

CLAMP SPACER

AIRpipe	DN
302 27 0001 01	20/25
302 27 0002 01	40/50/63

VORTEX FLOW METER

AIRpipe	DN
302 82 0100 02	20
302 82 0200 02	25
302 82 0400 02	40
302 82 0500 02	50
302 82 0600 01	63
302 82 0700 01	80
302 82 0800 01	100
302 82 1000 01	150

*Union connectors included

THREADED ADAPTORS

Aluminum, Male Thread *Male Thread

AIRpipe	BSP	DN	DN
301 31 0000 01	1/2"	1/2"	
301 31 0100 01	3/4"	3/4"	
301 31 0200 01	1"	1"	
301 31 0400 01	1 1/2"	1 1/2"	
301 31 0500 01	2"	2"	

Aluminum, Male Thread *Female Thread

AIRpipe	BSP	DN	DN
301 31 0400 02	1 1/2"	1"	
301 31 0500 02	2"	1"	
301 31 0500 03	2"	1 1/2"	
301 31 0600 01	2 1/2"	1"	
301 31 0600 02	2 1/2"	2"	
301 31 0700 01	3"	1"	
301 31 0700 02	3"	1 1/2"	
301 31 0700 03	3"	2"	
301 31 0700 04	3"	2 1/2"	
302 31 0000 04	1/2"	1/2"	
302 31 0000 03	1/2"	3/4"	
302 31 0100 03	3/4"	1/2"	
302 31 0200 03	1"	1/2"	

Brass, Male Thread *Male Thread

AIRpipe	BSP	DN	DN
302 31 0000 02	1/2"	1/4"	
302 31 0100 02	3/4"	1/2"	
302 31 0200 02	1"	3/4"	

PRESSURE METER

AIRpipe	BSP	DN
301 34 0001 01		

Male W*, (shock resistance), 0-1.6mpa, 1.6grade

ATMOLYSIS BAG

AIRpipe	BSP	Length (MM)
301 85 0001 01		200
301 85 0002 01		300
301 85 0003 01		400

* 4 1/2" aside outlet

SAMPLE BOX

AIRpipe	Length (MM)
302 46 0001 01	200x270x190mm

TOOL BOX

AIRpipe	Length (MM)
301 45 0001 02	460x330x140mm

* Items supplied in airpipe tool bag

DRILL (TAPPER)

AIRpipe	DN	Length (MM)
301 35 0006 01		14MM
301 35 0006 02		19MM
301 35 0006 03		25MM
301 35 0006 04		38MM
301 35 0006 05		51MM
301 35 0006 06		16MM
301 35 0006 07		22MM

DRILL HOLDER

AIRpipe	DN	Length (MM)
301 35 0005 01		14-30
301 35 0005 02		32-152

MARKER

AIRpipe	Length (MM)
120 44 0005 02	

ALUMINUM PIPE DEBURRER

AIRpipe	DN	Length (MM)
301 35 0003 01		20-50

SPANNERS

AIRpipe	Length (MM)
301 35 0007 01	

ALUMINUM PIPE CUTTER

AIRpipe	DN	Length (MM)
301 35 0002 02		Aluminum pipe cutter, 20-63
301 35 0002 03		Aluminum pipe cutter, 40-100
301 35 0002 04		0040 Aluminum pipe cutter blade
301 35 0002 05		0140 Aluminum pipe cutter blade

ELECTRIC PIPE CUTTER

AIRpipe	DN	Length (MM)
301 35 0001 01		63-200

FIXING BOLT

AIRpipe	DN	Length (MM)
301 33 0004 01		M8*60
301 33 0004 02		M8*80
301 33 0004 03		M8*70

SQUARE STEEL

ADJUSTABLE BRACKET

AIRpipe	Length (MM)	to suit
301 32 0004 01	1200-2400	Threaded
301 32 0005 01	1800-2000	Flange

GRIDER CLAMP

AIRpipe	Length (MM)
301 33 0003 01	M8

SQUARE STEEL CLAMP

AIRpipe	Length (MM)
301 33 0002 01	

PIPE BENDING TOOL

AIRpipe	DN	Length (MM)
301 47 0001 01		20
301 47 0002 01		25

*Bending Angle: MAX.90°

M8 STAPLING

AIRpipe	Length (MM)
301 33 0006 01	40
301 33 0005 01	3000

SELF TAP SCREWS

AIRpipe	Length (MM)
301 33 0004 01	
301 33 0004 02	
301 33 0004 03	

WALL MOUNTED BRACKET

AIRpipe	Length (MM)
301 32 0000 01	300
301 32 0001 01	500
301 32 0002 01	1200
301 32 0006 01	Suit to DN150/ DN200 pipe

UNIVERSAL BEAM SUSPENDER

AIRpipe	Length (MM)
301 33 0014 01	M6 8

FIXTURE CLAMPS & ACCESSORIES

AIRpipe	Length (MM)
301 33 0013 01	1"
301 33 0013 02	2"

WIRE SUSPENSION CABLE

AIRpipe	Length (MM)
301 33 0010 02	Φ12

AIRpipe	Suit to
301 33 0012 02	Φ12 wire Cable
301 33 0011 02	Φ12 wire Cable

LUGGING MACHINE



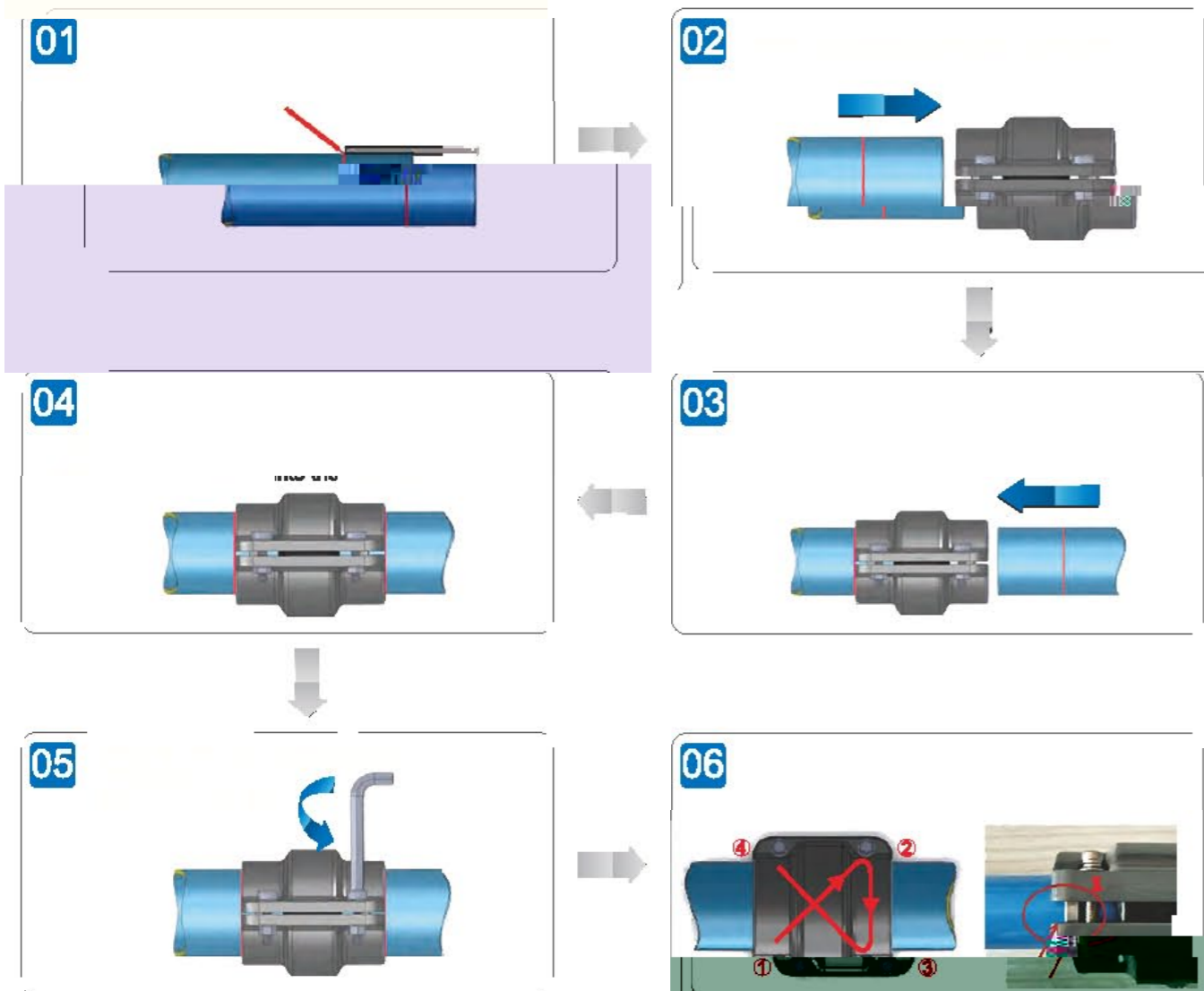
Superior Reliability!



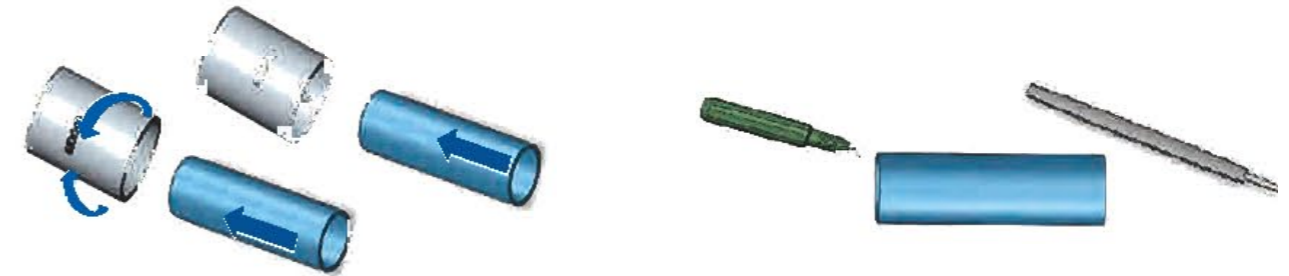
Insertion Depth S For DN20-DN50 Connector

DN	Insertion depth S (mm)
50	29

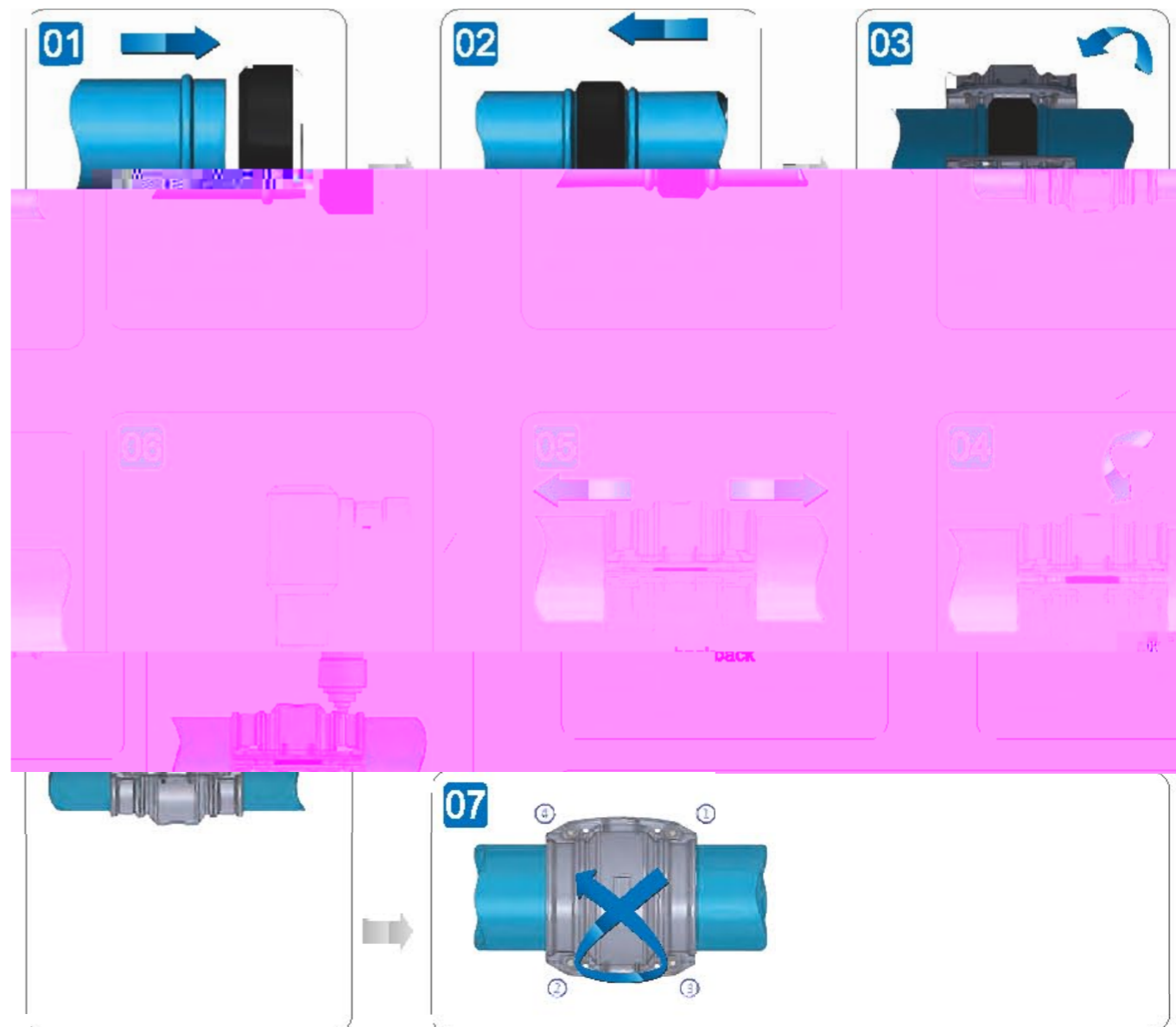
Installation Guide for DN20-DN50



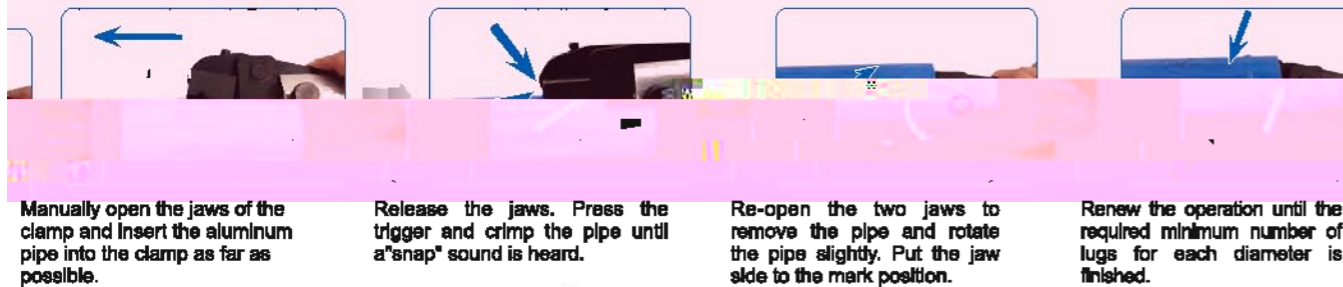
Deburr & Chamfer The Outer and Inner Edges Before Installation



Installation Guide for DN63-DN200



Hand-held hydraulic lugging machine operation requirements



Manually open the jaws of the clamp and insert the aluminum pipe into the clamp as far as possible.
 Release the jaws. Press the trigger and crimp the pipe until a "snap" sound is heard.
 Re-open the two jaws to remove the pipe and rotate the pipe slightly. Put the jaw side to the mark position.
 Renew the operation until the required minimum number of lugs for each diameter is finished.

Number of lugs for each diameter:

AIRPIPE	DN63	DN80	DN100	DN150	DN200
	5	6	6	6	2

Note: Do not overlap the lugs!

DN	H(mm)
63	3.0-3.3
80	3.0-3.3
100	3.0-3.3
150	3.0-3.3
200	3.0-3.3

Sizing Chart for Quick Drops

Drill	Drill Holder	DN(MM)	Quick Drops (PN)
301 35 0005 01	301 35 0008 08	φ16	302 10 0201 04 302 10 0202 03 302 11 0200 03 302 11 0401 03
301 35 0005 01	301 35 0008 07	φ22	302 10 0401 04 302 10 0402 04 302 11 0400 03 302 10 0602 01 302 10 0701 01 302 10 0702 01
			302 10 0801 01 302 10 0802 01 302 10 0801 01 302 10 1002 01 302 10 1102 01
301 35 0005 01	301 35 0008 03	φ26	302 10 0801 01 302 10 0802 01 302 10 1001 01 302 11 0301 01 302 11 0700 01 302 11 0701 01
			302 11 0500 01 302 11 0501 01 302 11 0900 01
			302 11 0800 01 302 11 1000 01
301 35 0005 02	301 35 0008 04	φ38	302 10 0804 01
301 35 0005 02	301 35 0008 05	φ51	302 10 1004 01 302 10 1006 01 302 10 1104 01 302 10 1105 01

- The following table is based on a closed-loop pipe system.
- Working pressure is 8bar and pressure drop is 0.4bar, flow speed not taken into account.

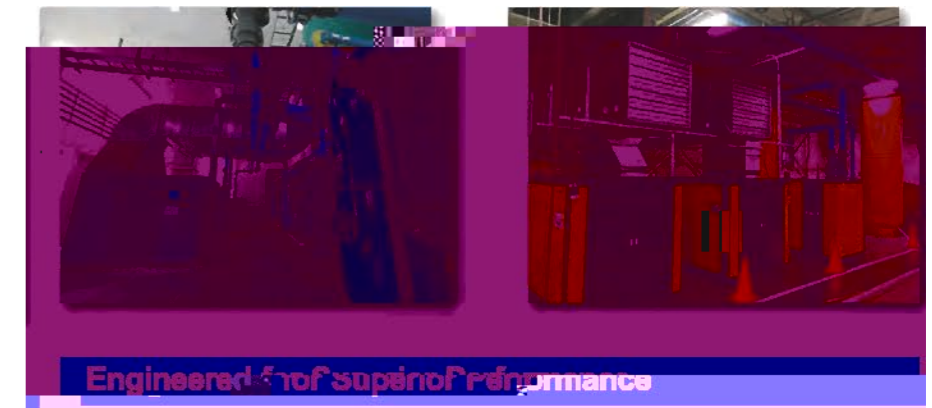
Flow N m ³ /h	Length									
	50M	100M	150M	300M	500M	750M	1000M	1300M	1600M	2000M
10	20	20	20	20	20	20	20	25	25	25
30	20	20	20	25	25	25	25	25	25	40
50	20	25	25	25	25	25	25	40	40	40
70	25	25	25	25	40	40	40	40	40	40
100	25	25	25	40	40	40	40	40	40	50
150	25	40	40	40	40	40	40	50	50	50
250	40	40	40	40	50	50	50	50	50	50
350	40	40	40	50	50	50	50	50	50	50
500	40	40	50	50	50	50	50	50	50	50
750	40	50	50	50	50	50	50	50	50	50
1000	50	50	50	50	50	50	50	50	50	50
1250	50	50	50	50	50	50	50	50	50	50
1500	50	50	50	50	50	50	50	50	50	50
1750	50	50	50	50	50	50	50	50	50	50
2000	50	50	50	50	50	50	50	50	50	50
2500	50	50	50	50	50	50	50	50	50	50
3000	50	50	50	50	50	50	50	50	50	50
3500	50	50	50	50	50	50	50	50	50	50
4000	50	50	50	50	50	50	50	50	50	50
4500	50	50	50	50	50	50	50	50	50	50
5000	50	50	50	50	50	50	50	50	50	50
5500	50	50	50	50	50	50	50	50	50	50
6000	50	50	50	50	50	50	50	50	50	50
6500	50	50	50	50	50	50	50	50	50	50
7000	50	50	50	50	50	50	50	50	50	50
7500	50	50	50	50	50	50	50	50	50	50
8000	50	50	50	50	50	50	50	50	50	50
8500	50	50	50	50	50	50	50	50	50	50
9000	50	50	50	50	50	50	50	50	50	50
9500	50	50	50	50	50	50	50	50	50	50
10000	50	50	50	50	50	50	50	50	50	50
10500	50	50	50	50	50	50	50	50	50	50
11000	50	50	50	50	50	50	50	50	50	50
11500	50	50	50	50	50	50	50	50	50	50
12000	50	50	50	50	50	50	50	50	50	50

Technical Specifications

- Max. working pressure: 15bar (-20°C ~ +80°C), 16bar (-20°C ~ +45°C)
Max. working pressure for DN200 is 13bar.
- Vacuum: 1mbar (absolute pressure).
- Working temperature: -20°C ~ +80°C.
- Suitable fluids: compressed air, oil-free or lubricated, wet, vacuum, inert gases.
- Fireproof and suitable for outdoor applications.

Qualification & Standards

2014/68/EU, ASME B31.1, TUV, GB/T4437.1-2000, EN755-8, TS, U694, ISO 8573-1



- We are committed to provide superior products and service.
- R&D is a continuous process linked to real-world conditions & market feedback.
- Always customer oriented, from design production to sales and service.

we are at your **SERVICE**

