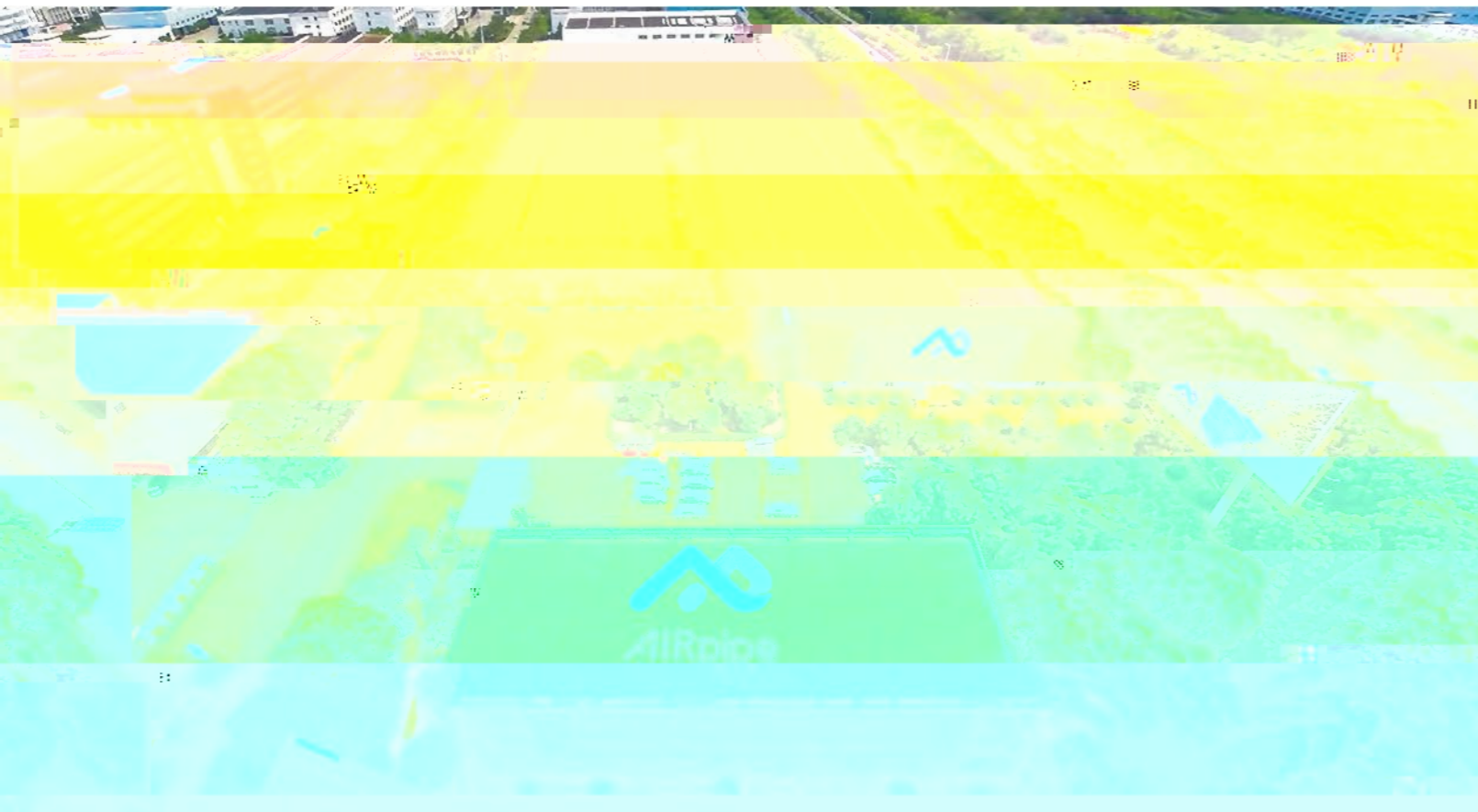




用心設計，只為最佳效能





### Superior Reliability & Longevity 最佳可靠性和使用年限

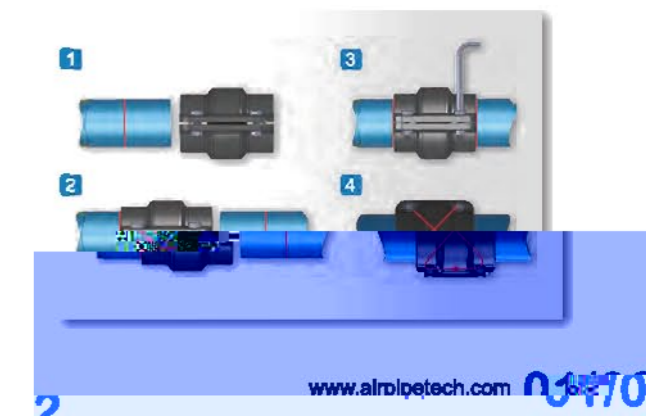
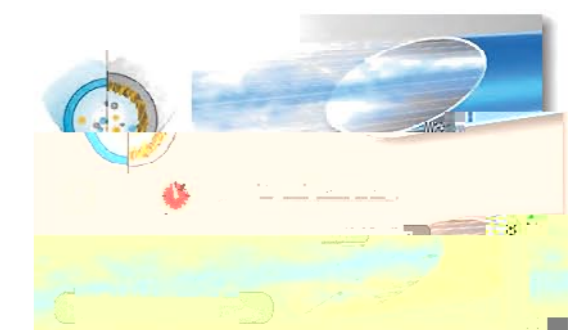
- U
- M
- P
- B
- J
- K

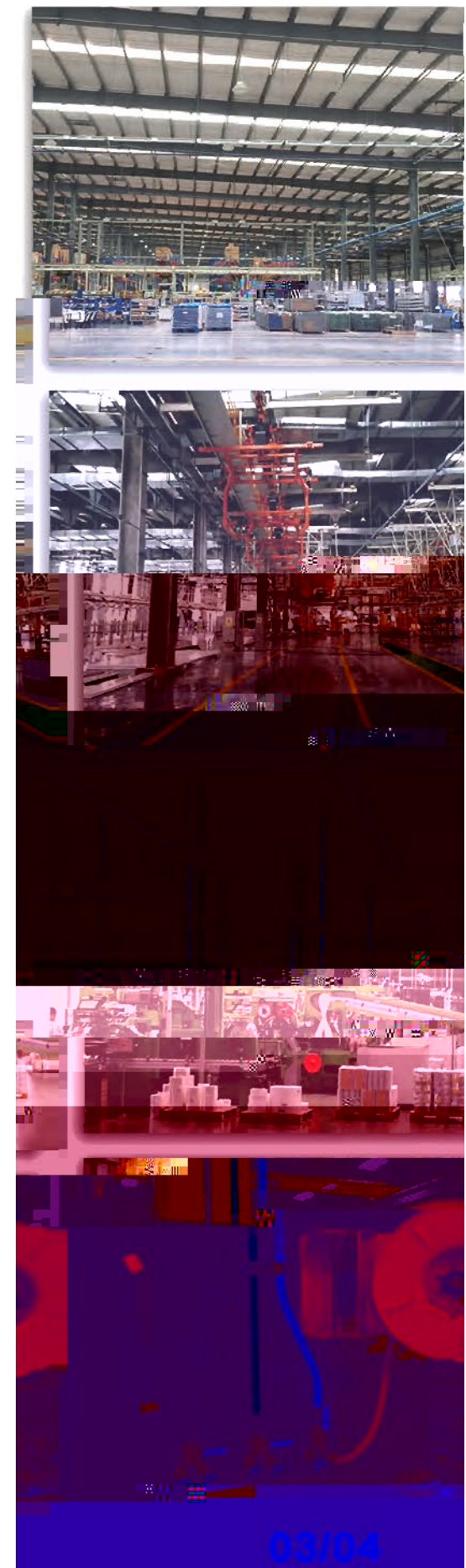
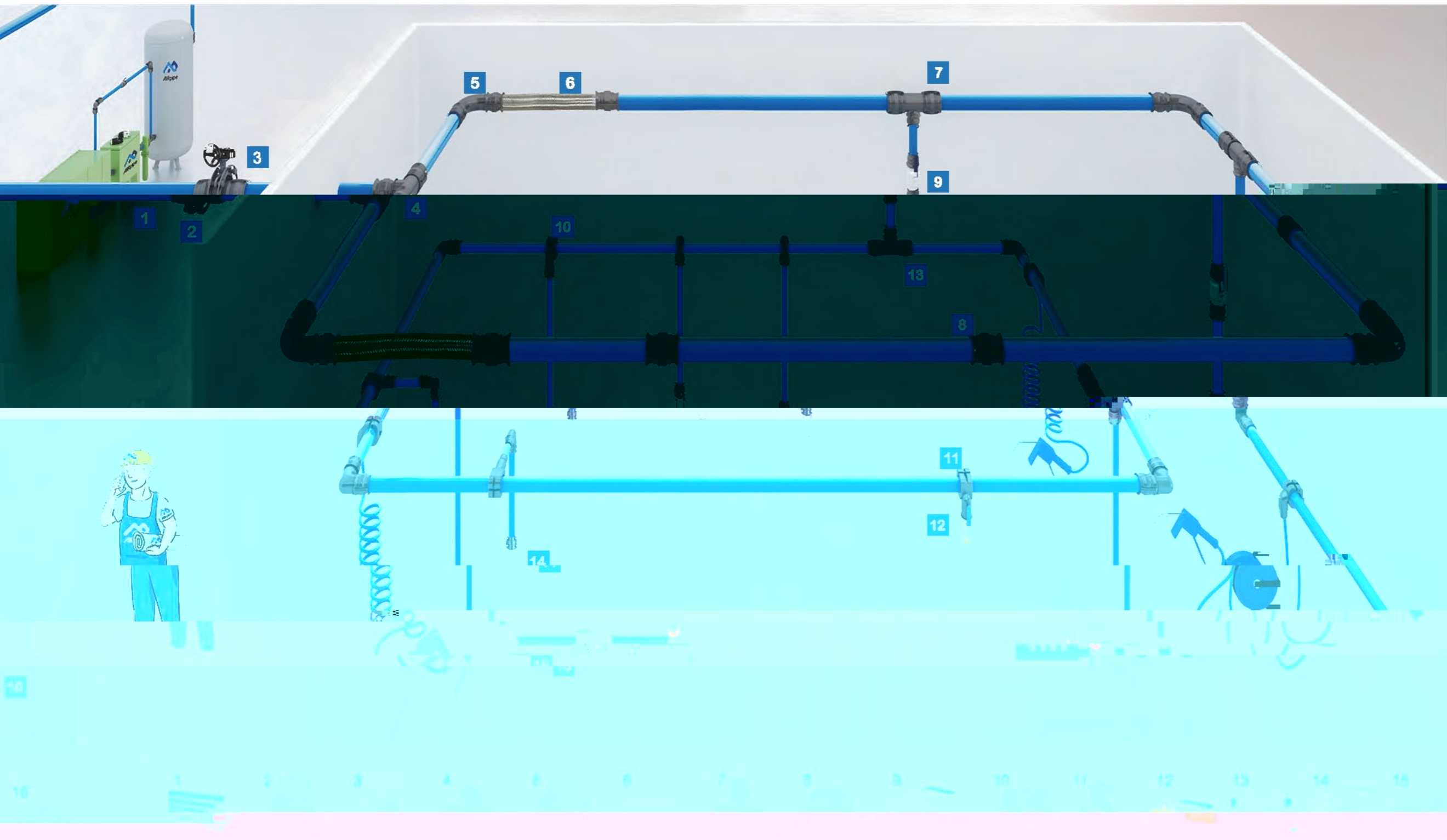
### Quick & Easy Modular Installation 便捷的模組化安裝

- R
- R
- C
- J
- J
- J

### Energy & Cost Savings 成本高效節能,最低使用成本

- T
- C
- J
- J
- J





- |                |                |   |   |
|----------------|----------------|---|---|
| 1              | 5 <sup>F</sup> | 5 | 5 |
| 2 <sup>F</sup> | 6 <sup>F</sup> | 6 | 6 |
| 3 <sup>F</sup> | 7 <sup>F</sup> | 7 | 7 |
| 4 <sup>F</sup> | 8 <sup>F</sup> | 8 | 8 |

# Product Range & Features

## 產品範圍和特性

### Rigid Aluminium Pipe 刚性铝合金管

### Quick connection butterfly valves 快速球阀和蝶阀



- Up to max.200mm diameter - 200m<sup>3</sup>/min flow single line.
- High-quality powder coating and colors customization.
- Designed for compressed air, vacuum, and inert gases.
- Light-weight & corrosion-free.
- 管徑最大200mm，最大流量200m<sup>3</sup>/min
- 高級粉體塗裝噴塗，耐久防腐，顏色可以定制
- 適用於所有噴油或無油壓縮空氣及惰性氣體
- 重量輕，防火UL90，可全天候室外安裝

- Quick connection.
- Available for BSP/NPT thread, flange, plug-in connection type.
- High-flow design ensures optimal performance.
- 一體式快接口，快速匹配管接頭
- 可選BSP或NPT標準螺紋，包括所有相關配件
- 高流速內徑設計耐久防腐

### Pipe Connectors 快速管接頭

### Flexible Hoses 彈性耐壓管



**SLIVER ALUMINIUM PIPE 5.8M**

AIRpipe	DN	OD	ID
301 00 0100 01	20	20.1	17.5
301 00 0200 01	25	25.1	22.5
301 00 0400 01	40	40.1	36.5
301 00 0500 01	50	50.1	45.7
301 00 0600 01	63	67.6	63.0
301 00 0700 01	80	84.8	80.0
301 00 0800 01	100	101.8	96.8
301 00 0900 01	150	153.0	147.5
301 00 1000 01	200	205.0	197.8

\*2.9M length please contact local sales.

**GREEN ALUMINIUM PIPE 5.8M Length**

AIRpipe	DN	OD	ID
301 00 0100 03	20	20.1	17.5
301 00 0200 03	25	25.1	22.5
301 00 0400 03	40	40.1	36.5
301 00 0500 03	50	50.1	45.7
301 00 0600 03	63	67.6	63.0
301 00 0700 03	80	84.8	80.0
301 00 0800 03	100	101.8	96.8
301 00 0900 03	150	153.0	147.5

**SLIVER ALUMINIUM PIPE 2.9M**

AIRpipe	DN	OD	ID
301 00 0100 02	20	20.1	17.5
301 00 0200 02	25	25.1	22.5
301 00 0400 02	40	40.1	36.5
301 00 0500 02	50	50.1	45.7
301 00 0600 02	63	67.6	63.0
301 00 0700 02	80	84.8	80.0
301 00 0800 02	100	101.8	96.8
301 00 0900 02	150	153.0	147.5
301 00 1000 02	200	205.0	197.8

\*2.9M length please contact local sales.

**END CAP 堵頭**

AIRpipe	DN
302 08 0100 02	20
302 08 0200 02	25
302 08 0400 02	40
302 08 0500 02	50

\*Union connector Included

**UNION CONNECTOR 等徑三通**

AIRpipe	DN
302 02 0100 01	20
302 02 0200 01	25
302 02 0400 01	40
302 02 0500 01	50
302 02 0601 05	63
302 02 0701 08	80
302 02 0801 08	100
302 02 1001 05	150
302 02 1101 05	200

**EQUAL TEE 等徑三通**

AIRpipe	DN
302 05 0100 02	20
302 05 0200 02	25
302 05 0400 02	40
302 05 0500 02	50

\*Union connectors included

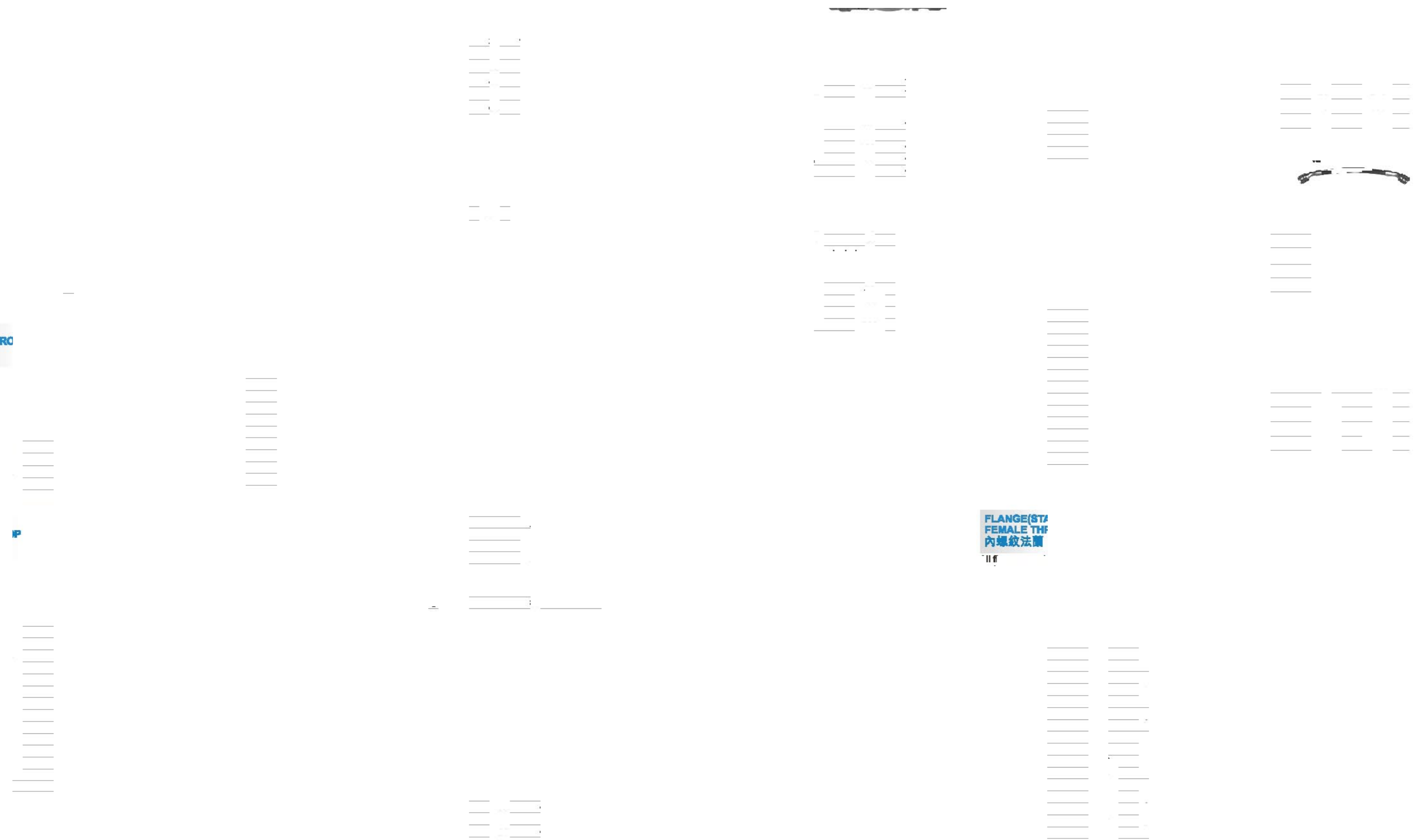
**REDUCING PIPE TO FIT CONNECTOR 異徑管對管**

AIRpipe	DN
302 05 0600 01	63
302 05 0700 01	80
302 05 1000 01	150
302 05 1100 01	200

\*Use three union connectors

**QUICK DRG**  
快換

**FLANGE (ST/  
FEMALE THF)**  
內螺紋法蘭



**FIXTURE CLAMPS & ACCESSORIES**  
管夾



**THREADED ADAPTORS**  
轉接頭



**ATMOLYSIS BAG**  
分子篩



\_\_\_\_\_

\_\_\_\_\_

\_\_\_\_\_

\_\_\_\_\_

\_\_\_\_\_

\_\_\_\_\_

\_\_\_\_\_

\_\_\_\_\_

\_\_\_\_\_

\_\_\_\_\_

\_\_\_\_\_

\_\_\_\_\_

\_\_\_\_\_

\_\_\_\_\_

\_\_\_\_\_



**TOOL BOX**



**DRILL (TAPPER)**  
鑽頭

**CLAMP SPACER**  
管夾墊

GER



**VORTEX FLOW METER**  
渦街流量計

LOW



\_\_\_\_\_

\_\_\_\_\_

\_\_\_\_\_

\_\_\_\_\_

\_\_\_\_\_

**PRESSURE METER**  
氣體壓力錶



**MARKER**  
記號器



**HOLE DEBURRER**  
去毛刺器

\_\_\_\_\_

\_\_\_\_\_

\_\_\_\_\_

\_\_\_\_\_

\_\_\_\_\_

\_\_\_\_\_

\_\_\_\_\_

\_\_\_\_\_

\_\_\_\_\_

\_\_\_\_\_

\_\_\_\_\_

\_\_\_\_\_

\_\_\_\_\_

\_\_\_\_\_

\_\_\_\_\_

**ALUMINUM PIPE DEBURRER**  
鋁管去毛刺器



**SPANNERS**  
水泵鉗



**ALUMINUM PIPE CUTTER**  
鋁管切割器



**ELECTRIC PIPE CUTTER**  
電動鋁管切割機



**FIXING BOLTS**  
螺栓



**SQUARE STEEL**  
方鋼



**ADJUSTABLE BRACKET**  
可伸縮支架



**GRIDER CLAMP**  
老虎鉗



**SQUARE STEEL CLAMP**  
壓板



**WALL MOUNTED BRACKET**  
懸臂支架



**UNIVERSAL BEAM SUSPENDER**  
外向抱箍吊扣



**FIXTURE CLAMPS & ACCESSORIES**  
萬向抱箍



**WIRE SUSPENSION CABLE**  
鋼絲繩



**M8 STUDDING**  
M8 螺絲



**SELF TAP SCREWS**  
螺絲

**DRILLING MACHINE**  
鑽機



# Superior Reliability!

最佳可靠性

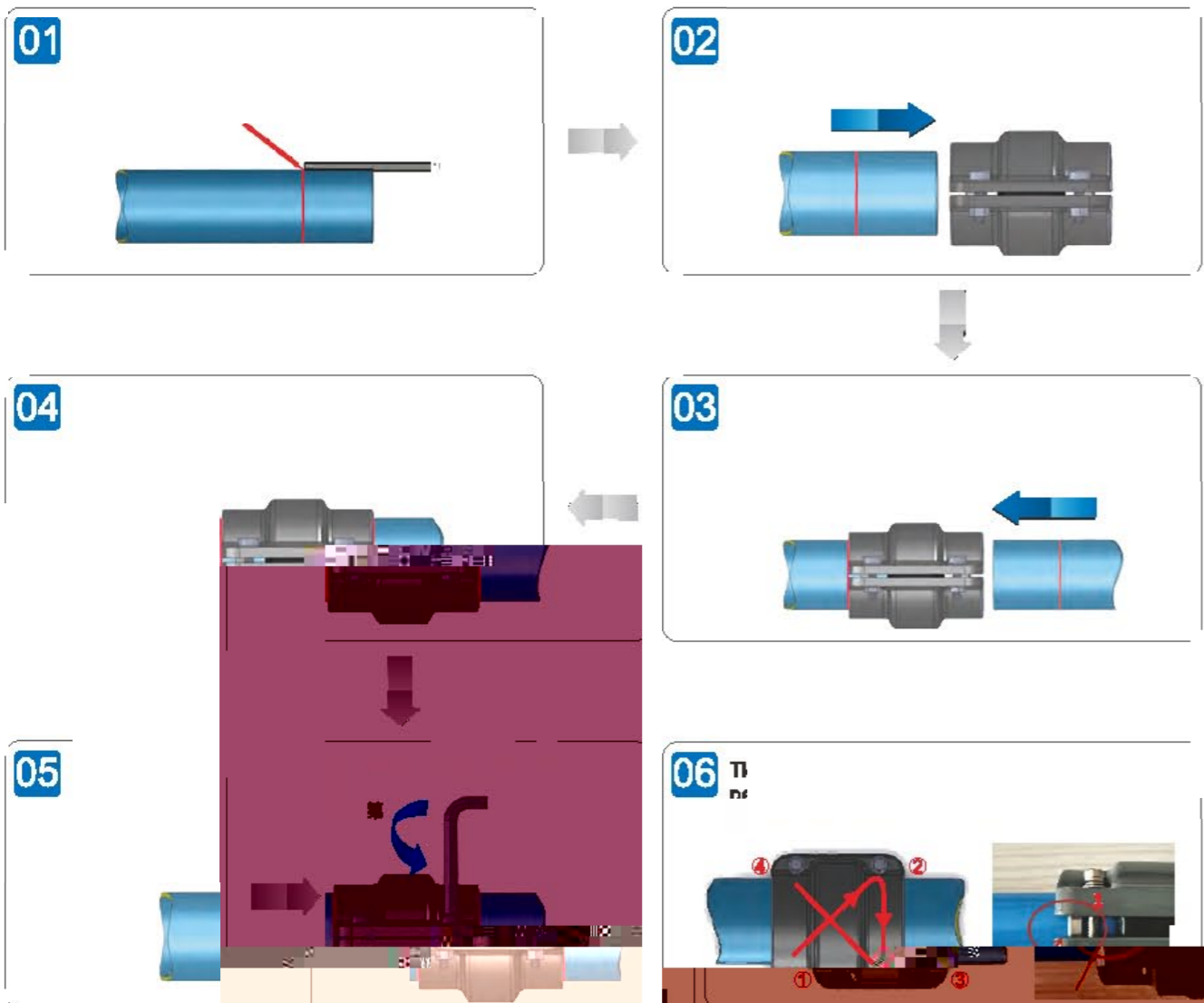


Insertion Depth S For DN20-DN50 Connector  
DN20-DN50 (3/4" - 2") 管路安裝插入深度S

DN	Insertion depth S (mm)	插入深度S (mm)
50		39

•	•
•	•

## Installation Guide for DN20-DN50 安裝指導DN20-DN50 (3/4" - 2")

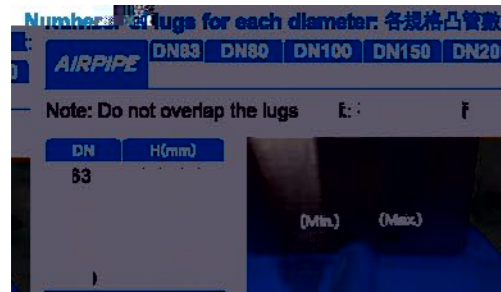
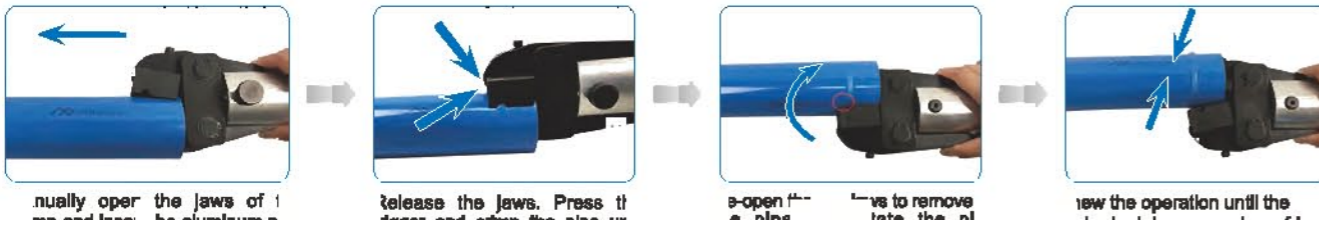


Deburr & Chamfer The Outer and Inner Edges Before Installation  
安裝前去除管端切口內外的毛邊

- 
- 



**Hand-held hydraulic lugging machine operation requirements 手持液壓凸管器作業要求**



**Sizing Chart for Quick Drops 快換尺寸表**

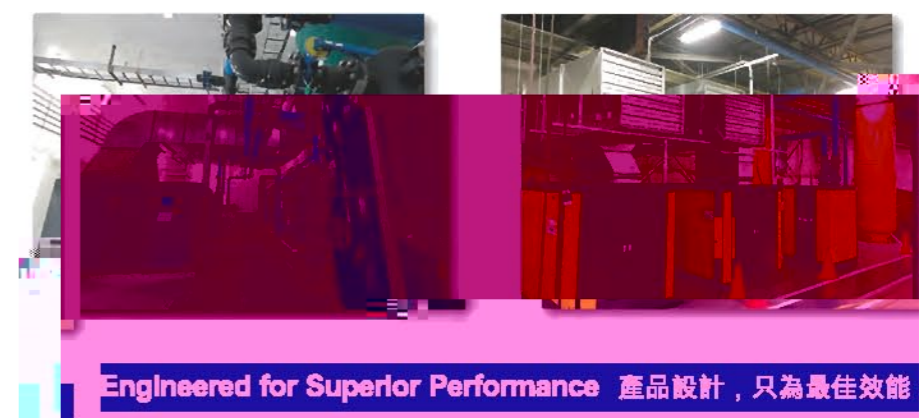
Dr (mm)	Dr (Inch)	DN (MM)	Quick Drops (PN)	快換 (PN)
301.35	0005.01	301.35	0005.01	
11.35	0005.02	301.35	0006.05	Φ61
		302.10	1004.01	302.10 1005.01
		302.10	1104.01	302.10 1106.01

Flow 管流速率 N m <sup>3</sup> /h	50M	100M	150M	200M	300M	500M	750M	1000M	1500M	2000M	3000M
20	20	20	20	20	20	20	20	20	20	20	20
30	30	30	30	30	30	30	30	30	30	30	30
40	40	40	40	40	40	40	40	40	40	40	40
50	50	50	50	50	50	50	50	50	50	50	50
60	60	60	60	60	60	60	60	60	60	60	60
70	70	70	70	70	70	70	70	70	70	70	70
80	80	80	80	80	80	80	80	80	80	80	80
90	90	90	90	90	90	90	90	90	90	90	90
100	100	100	100	100	100	100	100	100	100	100	100
120	120	120	120	120	120	120	120	120	120	120	120
150	150	150	150	150	150	150	150	150	150	150	150
180	180	180	180	180	180	180	180	180	180	180	180
200	200	200	200	200	200	200	200	200	200	200	200
250	250	250	250	250	250	250	250	250	250	250	250
300	300	300	300	300	300	300	300	300	300	300	300
350	350	350	350	350	350	350	350	350	350	350	350
400	400	400	400	400	400	400	400	400	400	400	400
450	450	450	450	450	450	450	450	450	450	450	450
500	500	500	500	500	500	500	500	500	500	500	500
550	550	550	550	550	550	550	550	550	550	550	550
600	600	600	600	600	600	600	600	600	600	600	600
650	650	650	650	650	650	650	650	650	650	650	650
700	700	700	700	700	700	700	700	700	700	700	700
750	750	750	750	750	750	750	750	750	750	750	750
800	800	800	800	800	800	800	800	800	800	800	800
850	850	850	850	850	850	850	850	850	850	850	850
900	900	900	900	900	900	900	900	900	900	900	900
950	950	950	950	950	950	950	950	950	950	950	950
1000	1000	1000	1000	1000	1000	1000	1000	1000	1000	1000	1000

**Technical Specifications 工況範圍**

- 適用管徑
- 適用管厚
- 適用管種
- 適用管材

**Qualification & Standards 符合規範和標準**



Engineered for Superior Performance 產品設計，只為最佳效能



we are at your **SERVICE**  
我們始終在您的身邊

